

Missouri: Disability Employment Statistics

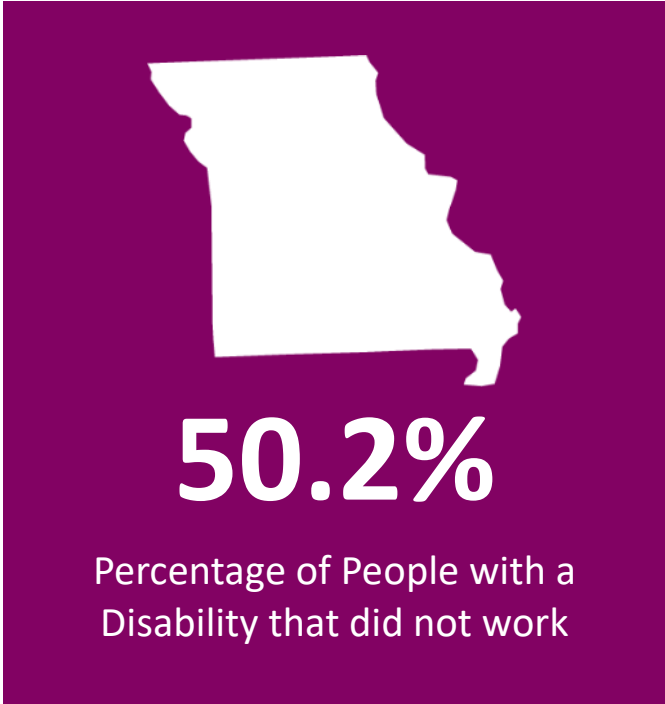
Missouri By the Numbers:

Population and Employment Statistics¹

Working Age Population with a Disability (18-64): **470,302**

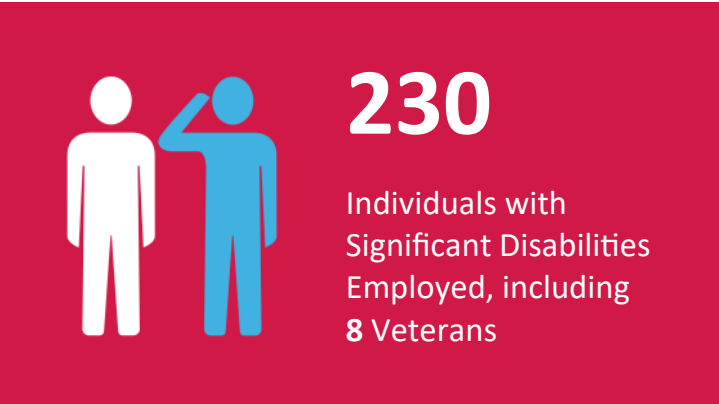
Percentage that did not work by Disability Type

Cognitive	54.7%
Hearing	39.2%
Ambulatory	68.8%
Visual	47.3%



SourceAmerica/AbilityOne Network By the Numbers²

4 nonprofit agencies headquartered in Missouri participated in the program as SourceAmerica®/AbilityOne® authorized providers.

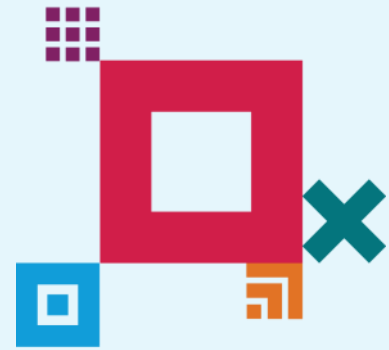


¹ Data from 2022 American Community Survey - <https://data.census.gov/cedsci/>

² Fiscal Year 2023

About SourceAmerica

SourceAmerica connects government customers and other organizations to a national network of AbilityOne® authorized providers that hire a talented segment of the workforce—people with disabilities. Established in 1974, SourceAmerica is committed to increasing economic and social inclusion and advocating for a more accessible future of work for people with disabilities. SourceAmerica, an AbilityOne® authorized enterprise, harnesses the momentum and boosts the capability of its network and customers as a leading job connector for the disability community. To learn more, visit SourceAmerica.org and follow @SourceAmerica on [Facebook](#), [Twitter](#), [Instagram](#), and [LinkedIn](#).



SourceAmerica Nonprofit Agencies Headquartered in Missouri

- JobOne
- MGI Services Corporation
- SWI Industrial Solutions, Inc.
- The Helping Hand of Goodwill Industries Extended Employment, Inc.

Other Nonprofit Agencies with AbilityOne Contracts in Missouri

- Anthony Wayne Rehabilitation Center, Inc.
- Challenge Unlimited, Inc.
- CW Resources, Inc.
- Portco, Inc.
- ServiceSource, Inc.