

Maine: Disability Employment Statistics

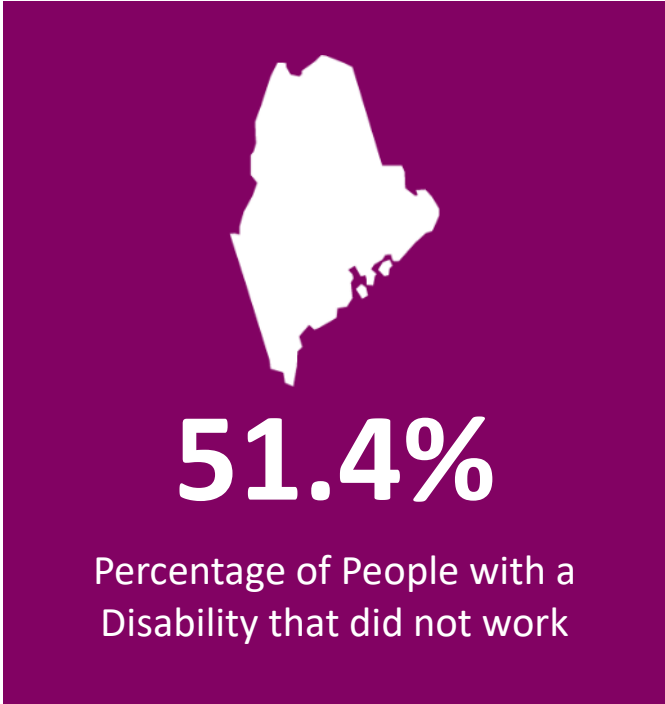
Maine By the Numbers:

Population and Employment Statistics¹

Working Age Population with a Disability (18-64): **108,043**

Percentage that did not work by Disability Type

Cognitive	54.4%
Hearing	36.2%
Ambulatory	69.8%
Visual	48%



SourceAmerica/AbilityOne Network By the Numbers²

One nonprofit agency headquartered in Maine participated in the program as a SourceAmerica®/AbilityOne® authorized provider.

62
Individuals with Significant Disabilities Employed, including 5 Veterans

\$23.46/hr
Average AbilityOne Employee Wage

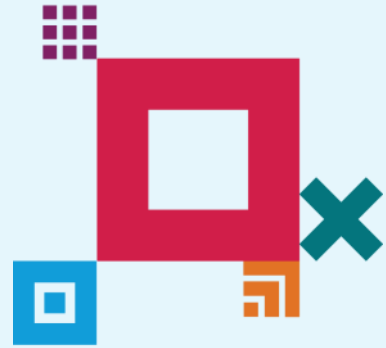
\$4.4 Million
Total AbilityOne Sales

¹ Data from 2022 American Community Survey - <https://data.census.gov/cedsci/>

² Fiscal Year 2023

About SourceAmerica

SourceAmerica connects government customers and other organizations to a national network of AbilityOne® authorized providers that hire a talented segment of the workforce—people with disabilities. Established in 1974, SourceAmerica is committed to increasing economic and social inclusion and advocating for a more accessible future of work for people with disabilities. SourceAmerica, an [AbilityOne®](#) authorized enterprise, harnesses the momentum and boosts the capability of its network and customers as a leading job connector for the disability community. To learn more, visit SourceAmerica.org and follow @SourceAmerica on [Facebook](#), [Twitter](#), [Instagram](#), and [LinkedIn](#).



SourceAmerica Nonprofit Agency Headquartered in Maine

- Northern New England Employment Services