

South Carolina: Disability Employment Statistics

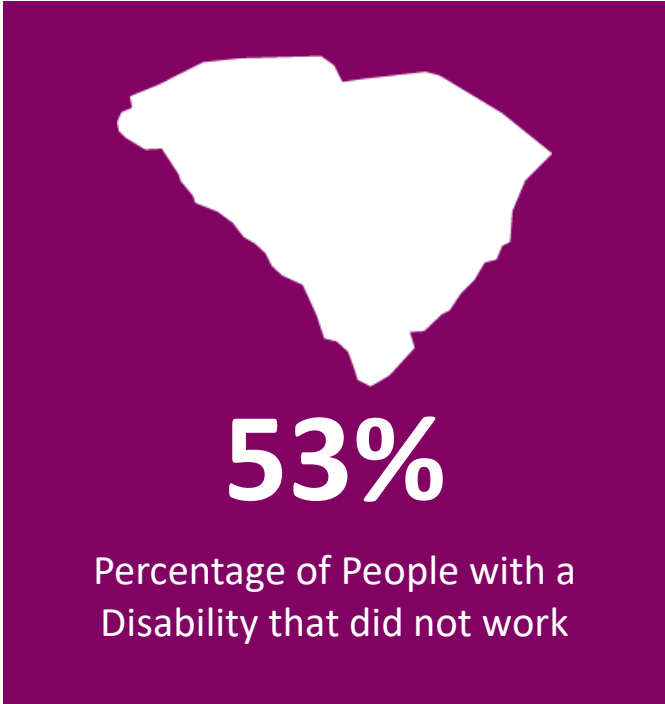
South Carolina By the Numbers:

Population and Employment Statistics¹

Working Age Population with a Disability (18-64): **378,198**

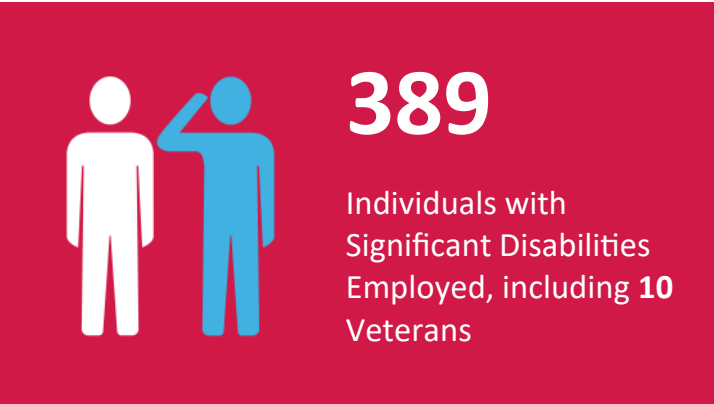
Percentage that did not work by Disability Type

Cognitive	57.8%
Hearing	39.1%
Ambulatory	67.9%
Visual	47.6%



SourceAmerica/AbilityOne Network By the Numbers²

10 nonprofit agencies headquartered in South Carolina participated in the program as SourceAmerica®/AbilityOne® authorized providers.

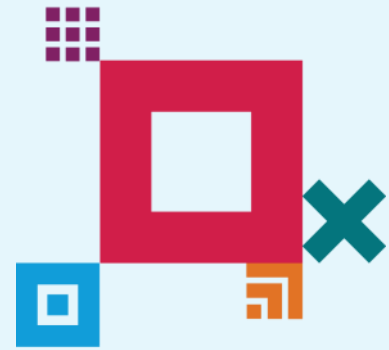


¹ Data from 2022 American Community Survey - <https://data.census.gov/cedsci/>

² Fiscal Year 2023

About SourceAmerica

SourceAmerica connects government customers and other organizations to a national network of AbilityOne® authorized providers that hire a talented segment of the workforce—people with disabilities. Established in 1974, SourceAmerica is committed to increasing economic and social inclusion and advocating for a more accessible future of work for people with disabilities. SourceAmerica, an [AbilityOne](#)® authorized enterprise, harnesses the momentum and boosts the capability of its network and customers as a leading job connector for the disability community. To learn more, visit SourceAmerica.org and follow @SourceAmerica on [Facebook](#), [Twitter](#), [Instagram](#), and [LinkedIn](#).



SourceAmerica Nonprofit Agencies Headquartered in South Carolina

- Beaufort Vocational Rehabilitation Center
- Charleston Vocational Rehabilitation Center
- Dorchester County Disabilities and Special Needs Board
- Florence County Disabilities and Special Needs Board
- Horry County Disabilities and Special Needs Board
- Palmetto Goodwill Services
- SC Vocations & Individual Advancement, Inc.
- The Charles Lea Center, Inc.
- The Tri-Development Center of Aiken County, Inc.
- Walterboro Vocational Rehabilitation Center

Other Nonprofit Agencies with AbilityOne Contracts in South Carolina

- Challenged Unlimited, Inc.
- CW Resources, Inc.
- OE Enterprises, Inc.
- Servtech
- Trace, Inc.