

Iowa: Disability Employment Statistics

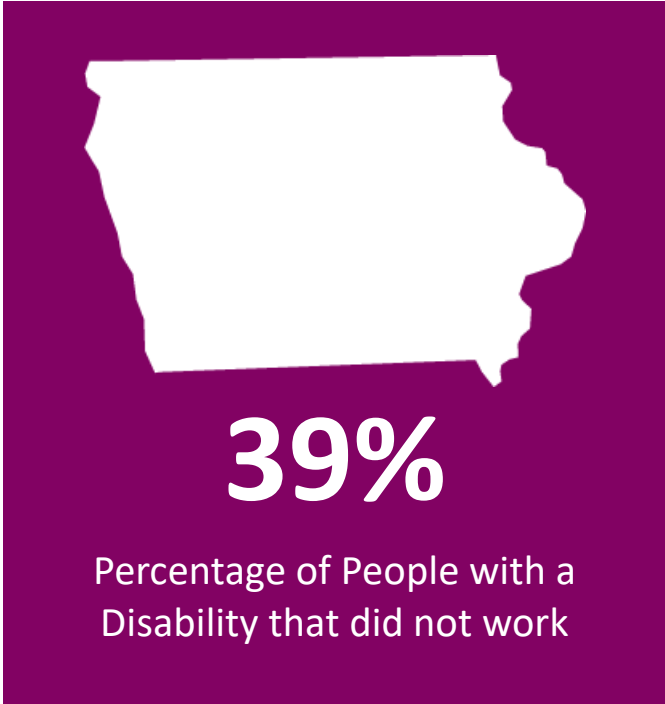
Iowa By the Numbers:

Population and Employment Statistics¹

Working Age Population with a Disability (18-64): **200,304**

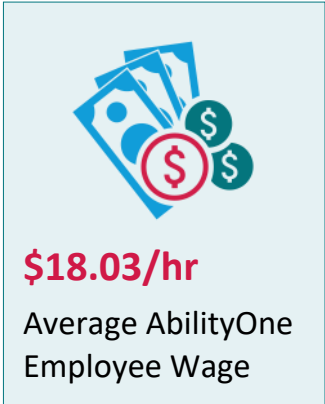
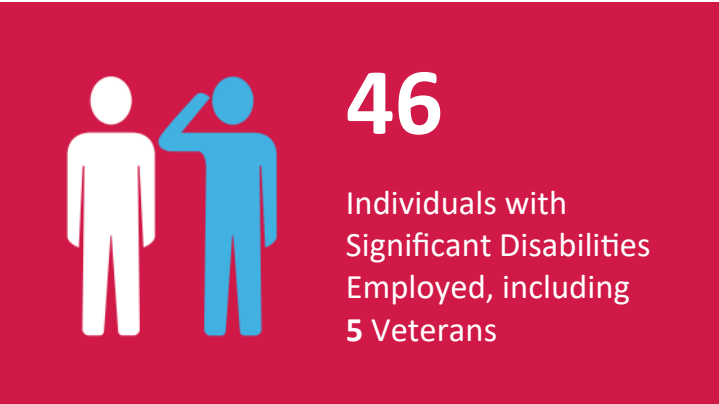
Percentage that did not work by Disability Type

Cognitive	44.4%
Hearing	25.6%
Ambulatory	55.5%
Visual	25.4%



SourceAmerica/AbilityOne Network By the Numbers²

One nonprofit agency headquartered in Iowa participated in the program as a SourceAmerica®/AbilityOne® authorized provider.

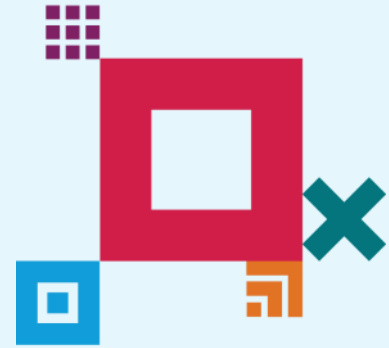


¹ Data from 2022 American Community Survey - <https://data.census.gov/cedsci/>

² Fiscal Year 2023

About SourceAmerica

SourceAmerica connects government customers and other organizations to a national network of AbilityOne® authorized providers that hire a talented segment of the workforce—people with disabilities. Established in 1974, SourceAmerica is committed to increasing economic and social inclusion and advocating for a more accessible future of work for people with disabilities. SourceAmerica, an [AbilityOne®](#) authorized enterprise, harnesses the momentum and boosts the capability of its network and customers as a leading job connector for the disability community. To learn more, visit SourceAmerica.org and follow @SourceAmerica on [Facebook](#), [Twitter](#), [Instagram](#), and [LinkedIn](#).



SourceAmerica Nonprofit Agency Headquartered in Iowa

- Heartland Goodwill Enterprises

Other Nonprofit Agencies with AbilityOne Contracts in Iowa

- The ARC of the Quad Cities
- CW Resources